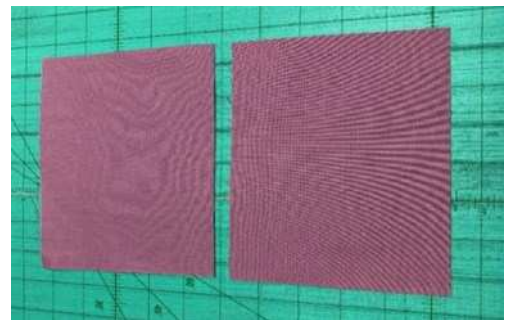

Fabric Mask Instructions

Pre - Sewing Preparation



Cut one piece 10" x 7.5" of main colour fabric.

Cut Two 7" x 5" of accent colour fabric for liner.



Cut two pieces of $\frac{1}{4}$ elastic for Ear loops

Directions:

Press over edges of each accent colour fabric then straight stitch hem on top horizontal edge on each accent piece.



Position liner accent pieces then sew accent pieces to the 10" main fabric leaving 1.5" on either side



Press seams open then press down towards inside of main fabric



Lay right side up and pinch all layers (outside fabric and liner)

Make three rows of pleats and hold in place using provided clips.



Press down pleats with Iron

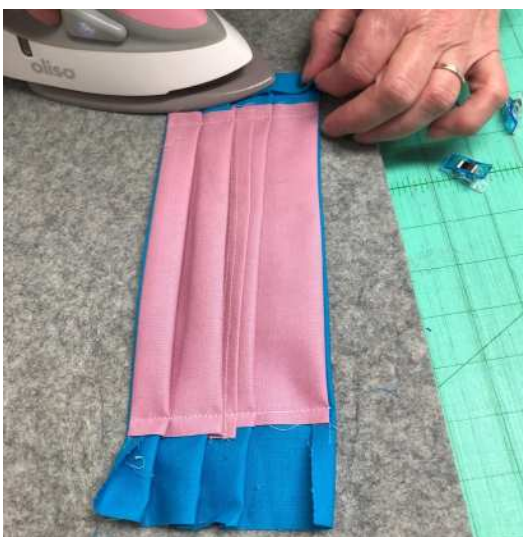
Remove clips a few at a time .



Next, Stitch down pleats close to edge of accent colour

Press in extended edge of main fabric towards liner

Then fold again and press and hold with clips to secure side casing for elastic.





Using a straight stitch - stitch on right side of mask near secure stitching line down each side of mask to form elastic casing.

When finished , Your project should now appear as below



Take elastic piece and using pin or bodkin thread through each side of mask casing.



Tie elastic in knot , then turn secured elastic until it is inside casing.

We have used a woven stabilizer for the removeable liner

You can use anything similar (even coffee filters cut to size in a pinch)



Your Fabric Mask is now complete!

Remember to wash after each time you wear it in Hot water and change your disposable filers.



Keep Safe, Healthy & Sewing!